



# ASTEE

## Board of Directors

Andrew Bowen

*President*

Jeff Dake

*President-Elect*

Scott Maye

*Treasurer*

Michelle Palmer

*Secretary*

Kelly Brinsko

*Executive Secretary*

Cassandra Burke

*Director*

Jenny Smith

*Director*

Larry Wayne

*Director*

January 2014

## Message from the New President

Dear Fellow ASTEE Members,

I am excited about the opportunity to serve ASTEE next year, and to hopefully continue the great work of those individuals who have given so much of their time to this organization in the past. As the year comes to a close, we all owe our gratitude to outgoing President Chris Bommarito, Executive Secretary Melissa Balogh, Secretary Sandy Koch, and Director Cassandra Burke. Their contributions to ASTEE over the past few years have been exceptional, and the organization has benefitted tremendously from their efforts. While they will be missed, it will be exciting to have some new faces and fresh ideas joining the board of directors, and I am looking forward to working with them to help ASTEE get the most out of their knowledge and talents. I must also thank Larry Wayne, who has generously volunteered to take over the Newsletter so that I can focus on carrying out the duties of the President.

I was advised by Vinny Desiderio, the founding President of ASTEE, to think of one important contribution that I could make to the organization and to focus on accomplishing that single goal during my term. I have spent some time thinking about his suggestion. There are so many important functions that ASTEE serves that it has been very difficult for me to choose just one. Here are some of the areas that I have been thinking about.

I began my career at the McCrone Research Institute, a non-profit whose mission revolves around training and research. My experience there taught me to value training and education very highly. I believe that one of the best uses of ASTEE funds is to sponsor training opportunities for ASTEE members. This is particularly critical in the current fiscal environment, in which training funds are virtually nonexistent for many laboratories. ASTEE has been able to fill this void for at least some of its members the past few years, sponsoring training workshops in the areas of cordage examination, postmortem banding of hair, and tape examination, co-sponsoring workshops with NWAFS on gastric contents and food analysis, post-blast investigation, and natural fiber identification, and providing free attendance to a McCrone Research Institute course for one member. I will certainly be looking to continue the trend of supporting training events during the coming year.

I would not be the President-Elect of ASTEE without the opportunities I have had to meet other professionals in my field and build personal relationships with them. The professional network that I have developed has provided me with countless opportunities, and I know that I am not alone in having that experience. I view the ASTEE networking events as a critical part of the organization's mission, and plan to continue sponsoring similar events this coming year, likely to coincide with both the AAFS Annual Meeting in Seattle in

## Message from the New President

February and the MAFS/ASTEE meeting in St. Paul in October. ASTEE simply could not provide all of these training and networking opportunities to its students without the generosity of our sponsors, including CRAIC Technologies, Foster + Freeman, Gateway Analytical, IXRF Systems, Leica, the McCrone Research Institute, and Mettler Toledo. I hope to retain all of our current sponsors and make ASTEE an attractive opportunity for new sponsors, following up on some of the leads generated by Chris Bommarito during his term.

I believe that a professional organization should be a valuable technical resource to its members. The two most obvious ways that ASTEE can serve in this role are through its website and through its journal, JASTEE. I hope that we can continue to build up the content in the Trace 101 area of our website, which has come a long way this past year, and perhaps make some progress in other areas that have been discussed in the past, such as the members-only section. I view JASTEE as a wonderful resource that should be a large part of what ASTEE gives back to the trace evidence community. I hope to continue our outreach to the trace evidence community to solicit new submissions for the journal, hopefully keeping the JASTEE Editor, Robyn Weimer, busy. In addition, this year will be the first in which ASTEE members can benefit from attending a professional meeting co-sponsored by ASTEE, along with MAFS. The meeting will be held in St. Paul, MN, October 6-10, 2014, and our hope is that the program is full of high quality trace evidence-related papers and workshops.

Finally, there would be no ASTEE without its members. As ASTEE increases its membership, it expands the diversity of experience, knowledge, perspectives, and ideas from which the organization can draw. However, a large and diverse membership will only benefit ASTEE if the organization can keep its members engaged. I hope to continue growing our membership and fostering membership engagement. This letter will be my first attempt at the latter.

The list starts to become overwhelming when written out. The good news is that ASTEE has a strong board of directors, numerous engaged committee members, and a diverse membership from which to draw upon for the rest. I would like to ask each and every ASTEE member, from past Presidents to new members, to do what Vinny asked me to do. Please consider all of the areas above, and try to think of just one area where you can make a contribution to ASTEE. Make a commitment to follow through with that one contribution. You could contribute by submitting a manuscript to JASTEE, by writing content for our website, by encouraging a colleague to become a member or providing a tip about a potential sponsor. You could volunteer to serve on an ASTEE committee, or encourage a colleague to do so. You could be making it a high priority to attend one of the ASTEE networking events or the meeting in October. Better yet, you could submit a paper related to trace evidence to the meeting program. If you have an area of expertise that the rest of us could benefit from, perhaps you could offer to teach a workshop for ASTEE members. There are countless ways, big and small, that each member can contribute to the organization. I am still not sure about the best place for me to make my mark on ASTEE this year. One thing I am sure of, however, is that together we have the potential to accomplish great things in the coming year.

Andy Bowen  
President, ASTEE

## Message from the Outgoing President

Dear ASTEE Members

As the year comes to a close, I wanted to let you all know what an honor and a privilege it has been to serve you as ASTEE President for 2013. As a founding member, I have seen ASTEE grow in membership and in stature each year. This is in no small part due to the many people that work on the Board of Directors, Committees and you the Members. I step aside without reservation as I know the organization is in the good hands of our President-Elect, Andy Bowen. If you are interested in taking a more active role in the organization, Andy will make every effort to make that happen.

I want to also publicly give special praise to two other outgoing Board members, Sandy Koch and Cassandra Burke and also our outgoing Executive Secretary, Melissa Balogh. We are the last of the original eight founding members and I must say it is gratifying to see the organization go in new directions under new leadership; while still seeing the footprints the original Board has left.

I also want to welcome our new 2014 Board members: Jeff Dake (President-Elect), Kelly Brinsko (Executive Secretary), Michelle Palmer (Secretary) and Tammy Jergovich (Director) as well as thank the other candidates that ran. ASTEE is fortunate to have so many talented members.

In 2014, ASTEE will be hosting an Event at AAFS in Seattle and also Co-hosting our first Scientific Meeting, along with MAFS in St. Paul, MN, October 4-10. Please check the website for more details as they become available.

This fall, ASTEE co-Sponsored several workshops with NWAFS as well as sponsored a tape workshop (Taught by members Jenny Smith and Will Randle) in Johnson County, KS. Our education committee works very hard to offer useful training opportunities for our members, so hopefully you are able to take advantage!

As I step down I wanted to share some concerns about the future of our discipline. I recently attended several national meetings and was saddened to hear of several laboratory systems either eliminating Trace Evidence or severely cutting back the discipline. I was saddened but not surprised. Don't get me wrong, I love trace evidence, I could not have asked for a more rewarding profession. We have without any question the coolest job in the lab. We help solve cases that would not be solved other  
***(Continued on p. 5)***



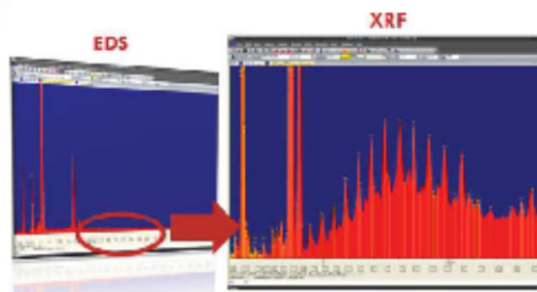


**Make your SEM  
work HARDER & SMARTER**  
Add micro-XRF to your SEM  
Increased detection above 2keV

## GLASS CHIPS

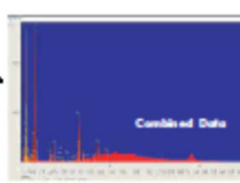
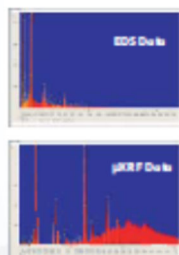


XRF gives parts per million detection without the background of EDS



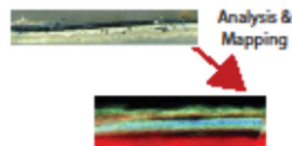
NIST 610 Glass Standard

## SOILS



Combined EDS and XRF data

## PAINT CHIPS



## Message from the Outgoing President

*(Continued From Page 3)*

wise. But we are expensive. We cost a lot per case for lab systems to support. So I implore you all, please be an advocate for our discipline. I know it is distasteful to toot your own horn, but when we solve a case where there is no DNA, you need to make that known to management. Decisions about the future of our discipline are made every day in labs like yours. Make sure that these decisions are informed ones. We often talk to one another about our value, but we need to stop preaching to the choir and start preaching to the masses.

Thank you for your membership, support, participation and dedication to ASTEE and the trace evidence discipline.

I wish you a happy and healthy holiday and New Year!

Best Regards,

Christopher Bommarito

## ASTEE at a Glance

The Northwest Association of Forensic Scientists (NWAFS) held their annual conference September 16-20, 2013 at the Hilton Hotel in Vancouver, WA. The NWAFS was lucky enough to have ASTEE sponsor 5 scientists for two of its workshops (Post-Blast Investigation and Natural Fiber Identification.)

The full-day Post-Blast workshop was instructed by Oregon State Police Detective Howard Greer, FBI Special Agent Wade Mutchler, and FBI Forensic Chemist Robert Mothershead. The training included presentations on evidence collection, analysis, and demonstrations of various explosives. After the demonstration, samples of the explosive residues and debris from pipe bombs were collected for use as training and reference samples.

The Natural Fiber Identification workshop was instructed by Dr. Susan Wilson of the Washington State Patrol-Tacoma Crime Lab. This 8 hour class consisted of lecture and hands-on examination of numerous natural fibers by stereoscope and PLM. This class covered topics from Chapters 8-10 of the SWG-MAT guidelines for Fiber training.

During its existence, ASTEE has sponsored various workshops at scientific meeting and the NWAFS is truly thankful to have been partners with ASTEE at their latest conference.

The NWAFS and the CAC will be having a joint meeting October 20-24, 2014 at the Double Tree Hotel in Rohnert Park, CA (Sonoma "Wine" Country.) Keep updated by visiting <http://nwafs.org/meetings.htm> and <http://www.cacnews.org/events/seminar/seminars.shtml>

*(contributed by Chris Hamburg, Forensic Scientist, Oregon State Police)*

## ***ASTEE Elections 2013***

### **Office of President-Elect**

Jeff Dake	118 (57%)
Kelly Brinsko	86 (41.5%)
Write-in	3 (1.4%)

### **WRITE-INS**

Jeff Jagmin	1 (0.5%)
Kristine Olsson	1 (0.5%)
Troy Ernst	1 (0.5%)

### **Office of Secretary**

Emily Turner	40 (19.7%)
Michelle Palmer	82 (40.4%)
Sarah Walbridge-Jones	81 (39.9%)
Write-in	0 (0.0%)

### **Office of Director**

Robyn Weimer	89 (44.3%)
Tammy Jergovich	112 (55.7%)
Write-in	0 (0.0%)

### **ASTEE Code of Ethics**

No	16 (7.7%)
Yes	192 (92.3%)

### **ASTEE Bylaws Amendments**

No	2 (1%)
Yes	206 (99%)

## ***JASTEE Update***

As with most journals, JASTEE is always on the lookout for high quality contributions. If you have been sitting on a great idea for a paper, or if you presented at one of the past few trace evidence symposia but have never written up your paper for publication, now is the time to act. Everyone benefits when these papers are published and shared with the broader community. We have big plans for JASTEE, but we cannot do it alone, so get writing, and contact Robyn if you have any questions at [Robyn.Weimer@dfs.virginia.gov](mailto:Robyn.Weimer@dfs.virginia.gov).

## ***Training Opportunities***

Do you know of a training opportunity in the trace analysis area? It doesn't matter how obscure, as long as it's somehow relevant to trace evidence. Starting with the next newsletter, we will be printing a calendar of training classes that may be of use to a trace evidence examiner. From general microscopy to cement analysis to fiber manufacturing. Please email information to Larry Wayne at [lew@falaboratories.com](mailto:lew@falaboratories.com) We are planning the next newsletter for March, so please send information on classes taking place after March 31, 2014.

## ***ASTEE 2014 Awards***

It is that time of year again, so we are looking for deserving individuals to be nominated for the Edmond Locard Award for Excellence in Trace Evidence, as well as for our \$250 ASTEE Scholarship. If there is someone you know who has had a large impact on you and others in the trace evidence field by sharing their time, knowledge, and expertise, please consider nominating them for the Locard Award. See page 19 for details of the award. If you know of a student who has excelled in their studies and who is an aspiring trace evidence examiner, please consider nominating them for the scholarship award. Details are on page 16.

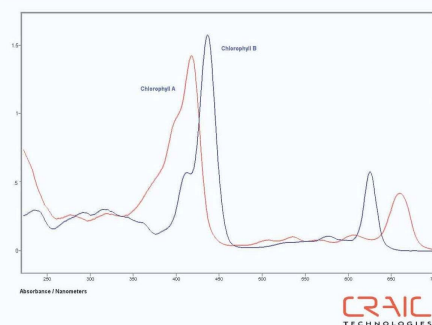
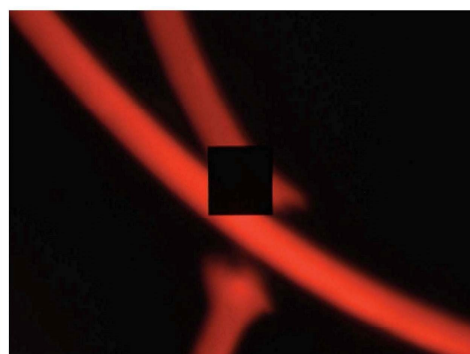
## ***ASTEE 2014 Committees***

Much of the day to day business of ASTEE is done behind the scenes by many hardworking individuals on several committees. Each year there is some turnover and now is the time to seek out new committee members. This is a great way to get involved in the organization and it's a great springboard to further ASTEE involvement such as an elected board position from director to president.

Current committees are: Audit, Awards, Bylaws, Communications, Education, Membership and Nominating. Descriptions of each of the committees are on the ASTEE website in the bylaws section. If you would like to volunteer for one of the committee positions, please email Andy Bowen at [AMBowen@uspis.gov](mailto:AMBowen@uspis.gov)

## ***2014 Dues***

It's the new year. Please remember to send in your dues for 2014. Fill out the form on page 20 and mail it in with your check for \$20.00 to the provided address. You may also use the online option and pay through the [asteetrace@gmail.com](mailto:asteetrace@gmail.com) account on PayPal. If you choose this option, we still ask that you email a copy of the form to [scott.maye@dfs.virginia.gov](mailto:scott.maye@dfs.virginia.gov) or fax the form to 804-786-6305 once your payment is submitted.



## YOUR SOLUTION FOR TRACE EVIDENCE

Advanced technology solutions for fibers, paints, glass, polymers, explosives, drugs and more. Call us today to learn how we can help you solve your case quickly and accurately.

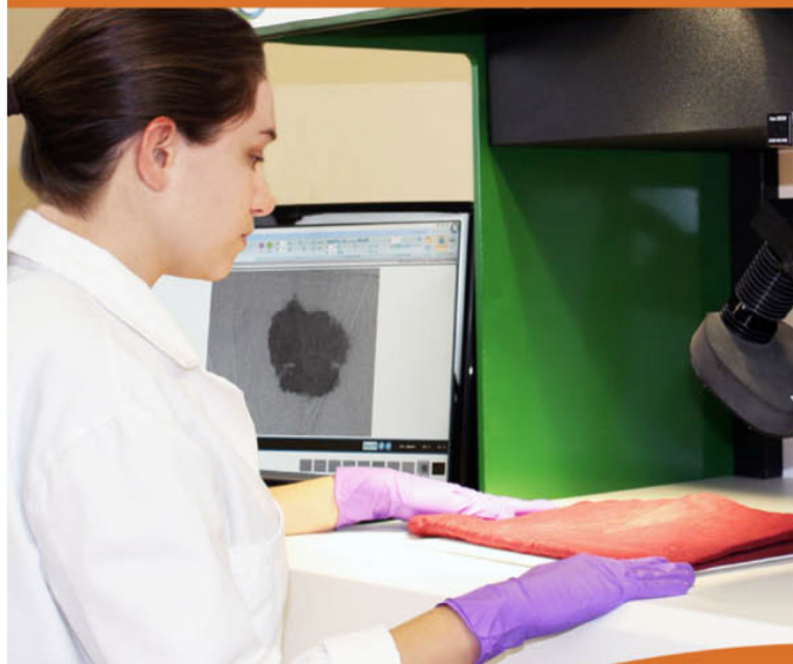
- UV-visible-NIR Microspectroscopy
- UV-Visible-NIR Polarization Spectra
- UV-visible-NIR Microscopic Imaging
- UV-Visible-NIR Fluorescence Spectra
- Glass Refractive Index
- UV-Visible-NIR Fluorescence Imaging
- Raman Microspectroscopy
- Glass Color Spectra
- UV-Visible-NIR Polarization Imaging

For more information, call **877.UV.CRAIC** or visit our website at **[www.microspectra.com](http://www.microspectra.com)**

©2011 CRAIC Technologies, Inc. San Dimas, California (USA).

**CRAIC**  
**TECHNOLOGIES**

# Forensic Analytical Testing & Consulting Services



- ▶ Trace Evidence Examination
  - Animal & Human Hair
  - Condom Lubricant
  - Glass
  - Gunshot Residue
  - Paint & Tape
  - Synthetic & Natural Fibers
  - Unknown Materials
- ▶ Cold Case Reviews
- ▶ Crime Scene Processing
- ▶ Court-Qualified Experts

## Reliable Support to Ease Casework Demands

With increasing workloads, decreasing budgets and growing backlogs, it's becoming more challenging to get work completed on time and on budget. Trust Gateway Analytical to be an extension of your own capabilities. Whether you need specialized expertise or equipment, conventional or innovative lab services, or guidance on a cold case - our forensic testing and consulting services produce accurate, legally defensible results that can help ease your casework demands.

Gateway Analytical is committed to quality. We are an ISO 9001:2008 certified laboratory and have more than 15 years of experience. You can rely on our expertise for trace evidence analysis, criminal and civil case review, innovative forensic analysis, and more.



Tel: +1 724-443-1900

E-mail: [info@gatewayanalytical.com](mailto:info@gatewayanalytical.com)

[www.gatewayanalytical.com](http://www.gatewayanalytical.com)



*Free Webinar, August 8, 2012:*  
**Forensic Analysis of Paint and Tapes  
for Police & Attorneys**  
Register: <http://goo.gl/pYaQA>

## ***Getting bullied in my own lab***

***Larry Wayne***

*The opinions below are solely those of Larry Wayne, and do not reflect the views of ASTEE .*

It's my first editorial for this newsletter and it is going to be a bit of a rant. Didn't want it to be. I like happy and chipper articles about challenging goals that produce fascinating results. My perkiness was unfortunately short lived. As I was planning on what to write I was contacted by one of my clients about doing an analysis. Being bullied into an analysis is more accurate, and that's the source of my rant.

As a trace evidence analyst, I get to work on a lot of varied projects, from paint to pollen to soils to fibers. It's a source of unending happiness that I get such varied things to look at. Even better, the projects are not all criminal cases. The greater proportions of my samples are civil matters or process control problems or contamination issues. These samples can afford more latitude in analysis, since the idea is simply to get an answer. I don't have to worry about Frye or Daubert challenges for a company whose fuel filters are clogging. I can invent and apply a new method as needed, so long as I can prove it's a valid answer.

My client wanted a specific analysis, but in a way that wouldn't work. Without giving too much information about someone whose money I'd still like to earn, the analysis involved quantitation of particles in settled dust samples. I had come up with a variant on this analysis originally for a very specific situation, which involves quantifying bits of char and ash in an effort to determine the levels of forest fire debris that have infiltrated a home.

Over the years, the method has held up well, with tweaking and improving here and there to make it even better. The results could survive a court challenge due to some extensive research and the clients were happy with the product. However..., as the method worked for this application, clients (new and existing) would come to me with not so similar problems and ask for the same kind of analysis. With some of these, the initial conditions were close enough so the method was adaptable, but requests were starting to come in that were not as easily worked with.

The reason that this specific request wouldn't work is one of quantitation. The client wanted a specific percentage value for soot. To the client, this was a valid request, as fires produce char, ash, soot and smoke. Soot makes it black, so you should be able to quantitate it. To me, the analyst, what the client wanted is in that limbo area where maybe I can give them some useful information, but not exactly what they say they want. So the calls start to go back and forth to try to get the client useful data without wasting their time or money. I attempted to explain why what the client initially wanted wasn't particularly feasible, with the following explanation:

When we try to quantify something, we need a basis on which to report a value. As readers of reports, we are used to seeing 5% of this, 27% of that, but what does that really mean? Five percent *how*? Related to what? Mass? Volume? Color? Turns out, the answer is really, really important. Let's take an example: We have three items we want to measure: 100 ping pong balls, 100 mylar birthday balloons and 100 golf balls. If we measure by strict number of items counted, there are equal numbers of each,

33.3% each to be nearly precise. Now let's look at measuring percentage by volume. The golf balls and the ping pong balls both measure in at about 41 cubic cm (I use large ping pong balls) and the mylar balloons measure in at 8000 cubic cm. That's 99% balloon, 0.5% ping pong ball and 0.5% golf ball. Now let's consider mass. Golf ball weigh in at a hefty 45.7 grams, ping pong balls are about 2.7 grams, and for the sake of argument, our balloons are also 2.7 grams. Now our results are 89% golf balls, 5.5% ping pong balls and 5.5% balloons.

We obtain three wildly different results just by changing the reference of measurement.

The analysis that we perform on char and ash is done on a percent area basis. We can do this because we know that the methodology is well tested ([1](#)) and that the particulate that we're examining (char, ash) falls within the size range that we are measuring against. Soot does not meet those criteria. While char and ash from wildfires commonly deposit particulate in the 1-500 micron size range, soot is far smaller, with particulate measuring from 0.05 – 1 micron. That's five orders of magnitude difference from small to large. The error bars alone would frighten any sane person.

The client didn't really care once I explained the whys. They just wanted a result on paper to show what they wanted to be shown. The fact that it was bad science meant nothing. The fact that the results as reported would mean absolutely nothing didn't matter. They were actually okay with that, even though I wasn't. Their client didn't care, so why should I? Just issue the report and let us deal with it, I was told.

This is, after all, revenue. When money is involved, there is tremendous pressure to do the work. Our CEO may sign my paycheck, but the clients pay my salary. That puts a client in a bit of a power position. Thank God the management at my company (occasionally) listens to me and will back me up on turning away the occasional project. Several uncomfortable phone calls later it became obvious that we simply couldn't do what they wanted and they were referred to another lab.

I might have been able to give them something useful, but they had their sights set on specific results, not how they were obtained. This makes me angry and subject to rants. We could have done the analysis... We can't control what our clients do with the results... Everyone reading this knows that's a pile of steaming dung. It does matter. It matters how we conduct ourselves in what we do, even in a situation where a client tries to bully a lab into producing useless information. I hate turning away business as much as the next person, but I will sleep better at night knowing that there is one less steaming pile of dung out there with my name on it.

Done with my rant. I feel *much* better now.

(1) EPA Method 600 R-93/116 Method for the Determination of Asbestos in Bulk Building Materials

## In Memoriam



Ron Wojciechowski, Retired Forensic Scientist

Ron Wojciechowski, Forensic Scientist recently retired from the Washington State Patrol Crime Lab passed away Wednesday, 10.23.2013, from stomach cancer.

Ron started out his forensic career in 1971 with the US Army Drug Abuse Lab in DaNang, Republic of Vietnam. He then moved to the 8th MP Group (Criminal Investigation Lab) in Long Binh, Republic of Vietnam. From 1972 to '79 he was stationed at the US Army Criminal Investigation Lab (Pacific), Camp Zama, Japan.

Ron decided to shed his boots and work for the Illinois Department of Law Enforcement Crime Lab in Maywood for three years. While in Illinois Ron had the opportunity to train under and work with Dr. Walter McCrone and Skip Palenik at McCrone Research Institute. Ron would often go there at 5:30 in the morning so he would have time to visit with Dr. McCrone before he had to work.

Missing the Army he re-enlisted where he was with the US Army Chemical Corps with various assignments in Japan, Alabama, Washington, and Johnston Atoll. Ron retired as a major after 21 years of service.

In October, 1995 Ron joined the Washington State Patrol, Tacoma Crime Laboratory where he did a bit of controlled substances cases but was most used for his microscopy skills in the microanalysis section. Ron's expertise was useful for the Green River investigation but did work in buttons, carpet fibers, and parachute cord, locating the manufacturer and conclusively associating the known and questioned materials in all three of them. He also had the opportunity to identify the type of oat meal that splashed onto a suspect in a homicide. Ron joined the NWAFS organization in 1996 and has taught workshops in black powder and polarizing microscopy. In 2008 Ron was promoted to Supervising Forensic Scientist of the Microanalysis section and retired in 2012.

Ron is survived by his wife Noriko and his daughters Rina and Mari. We will miss him.

**ffTA**

## Modular trace evidence analysis system

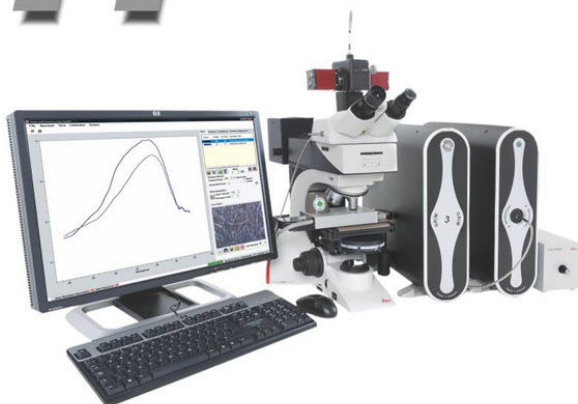
- Fluorescence Imaging
- Raman spectroscopy
- GRIM® Glass RI measurement
- Image processing
- UV Micro-spectroscopy

## A new concept from Foster + Freeman...

**The fTA is a powerful and flexible multifunctional system that provides the crime laboratory with a range of analytical facilities using a single microscope and PC.**

Built around the Leica DM2500 laboratory microscope the modular design of the fTA allows the end user to build an instrument that meets their own specific laboratory requirements with the option of retro-fitting new modules to expand the system's capabilities when required.

The multi-functional fTA can be seen to improve laboratory efficiency while at the same time providing an economical resource designed to match your laboratorys requirements.



**foster + freeman**

**Innovation in Trace Evidence Analysis**  
**by foster + freeman**

## Improving the Quality of Forensic Evidence



## Laser Induced Breakdown Spectrometer

## Versatile Foster + Freeman ECCO adds LIBS to the forensic examiner's arsenal.

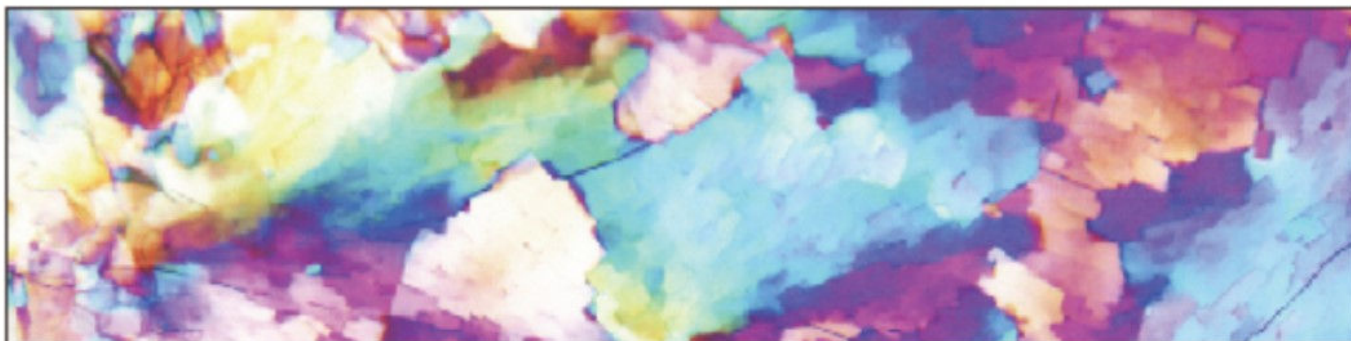
ECCO is a new turnkey system from Foster + Freeman designed to give elemental analysis of trace evidence such as glass, metals, paint, fibres, tapes, minerals and fillers, etc. as well as rapid screening of GSR by laser induced breakdown spectroscopy (LIBS).

LIBS is a relatively new technique for elemental analysis which offers significant advantages in speed, sensitivity and cost effectiveness over other processes such as XRF, SEM, and mass spectroscopy.

Elemental comparisons with ECCO are fast and simple to perform, require minimal sample preparation and give immediate read out of the major, minor and trace elements down to concentrations of low parts per million.

- Automatic identification of elements
- Casework and research modes of operation
- Dedicated software for routine analysis





# Inter/Micro 2014

June 2-6, 2014

at McCrone Research Institute in Chicago

McCrone Research Institute cordially invites you to participate in Inter/Micro 2014 – the premier international microscopy conference.

Papers are being solicited in micro-analytical techniques and instrumentation, environmental and industrial microscopy, and chemical and forensic microscopy.

**The deadline to submit titles and abstracts is March 1, 2014.**

For more information, visit our website at: [www.mcri.org](http://www.mcri.org)  
Contact us at (312) 842-7100 or by email at: [intermicro@mcri.org](mailto:intermicro@mcri.org)

*We look forward to seeing you at Inter/Micro in Chicago!*



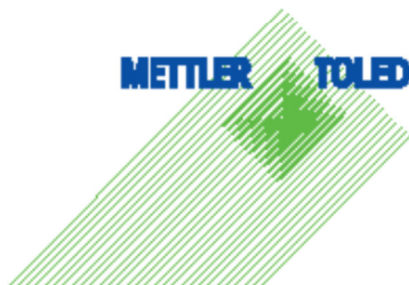


## Just Think...What's at Stake

There's no room for error. While other scientists might be able to mitigate day-to-day mistakes, you cannot. For you, inaccuracies can result in wrongful convictions, felonies being reduced to misdemeanors or guilty criminals being set free. How do you know your results will hold up when it matters most?

To find out, visit [www.mt.com/forensiclabs](http://www.mt.com/forensiclabs).

**METTLER TOLEDO**





## **American Society of Trace Evidence Examiners Scholarship Award**

**Criteria:** This scholarship of \$250 is to be presented to a student who has demonstrated academic excellence in the field of Forensic Science, with an emphasis in Trace Evidence.

**Eligibility Requirements:** Applicants must be currently enrolled as an undergraduate or graduate student in a Forensic Science or related science program with plans on pursuing work in the Trace Evidence field. Applicants must demonstrate excellence in his/her academic program.

**Application Requirements:** Applicants will submit an essay of no more than 1000 words in which they detail their personal goals in regard to Trace Evidence, their achievements, and why they feel they should be considered for this award. Applicants will provide an official school transcript which must include semester grades for the most recent completed semester. Applicants will submit a letter of recommendation from a professor in the applicant's curriculum accompanied by the Scholarship Recommendation form. Applicants will submit a completed Scholarship Applicant form.

All required materials must be received no later than midnight on March 31, 2014. Applicants may e-mail all materials except the official school transcript. The school transcript must be an original mailed by the school or the applicant. Scans or photocopies will not be accepted.

Interested candidates should submit all required materials to:

**Michelle Palmer**  
Virginia Department of Forensic Science  
6600 Northside High School Road  
Roanoke, VA 24019  
[Michelle.Palmer@dfs.virginia.gov](mailto:Michelle.Palmer@dfs.virginia.gov)

If you have any questions, please contact Michelle Palmer at (540) 283-5937 or via e-mail.



## American Society of Trace Evidence Examiners Scholarship Applicant Form

Name: \_\_\_\_\_

School Residence Address:

\_\_\_\_\_

Home Address:

\_\_\_\_\_

School Phone Number: \_\_\_\_\_ Home Phone Number: \_\_\_\_\_

Alternate Phone Number: \_\_\_\_\_

College attended: \_\_\_\_\_

Degree program: \_\_\_\_\_

Current Year: \_\_\_\_\_

Please indicate which address and phone number is the best one for contacting you.

Application Requirements:

- Scholarship Applicant Form
- Scholarship Recommendation Form
- Official School Transcript, including grades for the most recent completed semester (mailed)
- Essay detailing personal goals with regards to Trace Evidence, achievements, and reasons for award consideration (limit 1000 words)

Interested candidates should submit all required materials to:

Michelle Palmer  
Virginia Department of Forensic Science  
6600 Northside High School Road  
Roanoke, VA 24019  
[Michelle.Palmer@dfs.virginia.gov](mailto:Michelle.Palmer@dfs.virginia.gov)  
(540) 283-5937



## American Society of Trace Evidence Examiners Scholarship Recommendation Form

Candidate Name: \_\_\_\_\_

Affiliation to Candidate: \_\_\_\_\_

Professor Name: \_\_\_\_\_

Signature: \_\_\_\_\_ Date: \_\_\_\_\_

Title of Recommender: \_\_\_\_\_

College/Institution: \_\_\_\_\_

Address: \_\_\_\_\_

\_\_\_\_\_

Contact Number: \_\_\_\_\_

Please include the following information when submitting the recommendation for the candidate: Candidate's knowledge of the subject matter, ability to work with others, communication skills, reliability, attitude, integrity, motivation, maturity, and how relevant the candidate's course of study is to the field of Trace Evidence. Please feel free to add any additional information regarding this candidate that you feel would be helpful.

Please mail, e-mail or have the candidate submit this form and the letter of recommendation to:

Michelle Palmer  
Virginia Department of Forensic Science  
6600 Northside High School Road  
Roanoke, VA 24019  
[Michelle.Palmer@dfs.virginia.gov](mailto:Michelle.Palmer@dfs.virginia.gov)

If you have any questions, please contact Michelle Palmer at (540) 283-5937 or via e-mail.



## The Edmond Locard Award for Excellence in Trace Evidence

**Criteria:** This award is to be presented to an individual who has demonstrated excellence in the field of Trace Evidence. This award will be determined by nomination. Nominee must be a member of ASTEE and have a minimum of ten years in Trace Evidence. Nominee will have made a major contribution to the field of Trace Evidence. This could include teaching or training, presented or published research, or innovations in techniques, methods or instrumentation in the Trace Evidence field.

**Give a summary of the nominee's background and the reason(s) for the nomination:**  
(Attach additional sheets if necessary)

**Submitted by:**

**Address:**

**Work Phone:** (      )

**All nominations must be received by the Awards Committee for review no later than midnight on March 31, 2014. The recommendations of the Awards Committee will then be forwarded to the ASTEE Board of Directors, who will determine the final choice for the award recipient.**

**Please mail or e-mail nomination to:**

**Michelle Palmer**  
**Virginia Department of Forensic Science**  
**6600 Northside High School Road**  
**Roanoke, VA 24019**  
[Michelle.Palmer@dfs.virginia.gov](mailto:Michelle.Palmer@dfs.virginia.gov)

**If you have any questions, please contact Michelle Palmer at (540) 283-5937**

**Board of Directors**

**Andy Bowen**  
*President*

**Jeff Dake**  
*President-Elect*

**Scott Maye**  
*Treasurer*

**Michelle Palmer**  
*Secretary*

**Tammy Jergovich**  
*Director*

**Larry Wayne**  
*Director*

**Jenny Smith**  
*Director*

**Kelly Brinsko**  
*Executive Secretary*

Dear ASTEE member,

Please remit the sum of \$20.00 to ASTEE in payment of your membership dues for the 2014 calendar year by March 31, 2014. Please add a \$5.00 late fee for payment received after March 31, 2014. U.S. members remit checks and non-U.S. members remit International Money Orders payable to ASTEE.

Please send your payment to :

**Scott Maye—ASTEE Treasurer**  
**Virginia Department of Forensic Science**  
**700 North 5th Street**  
**Richmond, Virginia 23219**

If you prefer to use our online option, you can pay through the **asteetrace@gmail.com** account on PayPal. If you choose this option, please email a copy of this form to [scott.maye@dfs.virginia.gov](mailto:scott.maye@dfs.virginia.gov) or fax the form to 804-786-6305 once your payment is submitted.

Please complete the following information and mail with your payment:

Name \_\_\_\_\_

Membership # \_\_\_\_\_

Title \_\_\_\_\_

Address \_\_\_\_\_

Phone # \_\_\_\_\_ Fax # \_\_\_\_\_

Email \_\_\_\_\_

☐

Please check if any of the above information has changed

☐

Please check if you prefer **not** to have your contact information published in the ASTEE membership directory

If you have any inquires concerning your membership dues, please contact Scott Maye at [scott.maye@dfs.virginia.gov](mailto:scott.maye@dfs.virginia.gov) or 804-588-4168.



[WWW.ASTEETRACE.ORG](http://WWW.ASTEETRACE.ORG)