



ASTEE

American Society of Trace Evidence Examiners

July 2013

Message from the President

Dear ASTEE Members,

We are almost through half the year and I wanted to review some of the activities that ASTEE has been involved in during the first half of the year as well as some future plans.

For those of you that attended the American Academy meeting in D.C., I believe the ASTEE events were a highlight. ASTEE Past-President Vinny Desiderio, President-Elect Andy Bowen and Bill Chapin put on a great workshop on the Analysis of Chemical Unknowns, ASTEE planned and sponsored a workshop (free to ASTEE members) on post-mortem hair banding at the Smithsonian, taught by ASTEE Secretary Sandra Koch, Amy Michaud, Steve Shaw and Karen Lowe, and ASTEE hosted a very successful social event at the Museum of Crime and Punishment (pictures on pages 7-8). Many thanks to the ASTEE members that planned and sponsored the event and to our sponsors, without whom such events would not be possible.

In May, ASTEE co-sponsored two lectures by Dr. Brian Ford in the San Francisco Bay Area, one on early microscopy and the other on spontaneous human combustion. I understand both were well received and were attended by a total of approximately 130 scientists.

ASTEE in conjunction with the McCrone Research Institute (McRI) is also providing funding for an ASTEE member to attend a free McRI course along with a \$500 stipend for travel. We received four applications for this Professional Development Award (PDA) and our awards committee has chosen Christina Henry of the Santa Clara County DA Crime Lab as the recipient of the scholarship. She plans on taking a McRI explosives course and will utilize the experience in writing explosives analysis protocols at her laboratory. The awards committee noted that all four applicants were deserving of the PDA and it was difficult to choose only one. Many thanks to all of the applicants and the awards committee.

Looking towards the future, I have been in communications with the MAFS planning committee in regards to the Joint meeting of ASTEE and MAFS planned for St. Paul, MN from October 6-10, 2014. It looks like we will have a great meeting with both workshops and social events planned for ASTEE members. I am particularly excited as this will be the first official ASTEE meeting and it will be a joining of two organizations that I care about deeply. It certainly will not be an event to be missed.

On again, off again, on again, off again... The 2013 NIJ Trace Evidence Symposium was planned, then cancelled, was back on scheduled for September 17-19, 2013, and now is

(Cont. on Page 2)

Board of Directors

Christopher Bommarito

President

Andrew Bowen

President-Elect

Scott Maye

Treasurer

Sandy Koch

Secretary

Melissa Balogh

Executive Secretary

Cassandra Burke

Director

Jenny Smith

Director

Larry Wayne

Director

Message from the President *(Cont. From Page 1)*

cancelled again. My understanding is that the Symposium was primarily going to consist of factory tours for approximately 40 attendees. Once it was cancelled, our training committee began to make plans to have ASTEE sponsor the tours and pay for the transportation. Once it was back on again, we backed off of those plans. Whether NIJ will try again for 2014, I do not know, but if it does, ASTEE will be certain to support the event to the best of our abilities, including hosting a social event. If not, I believe ASTEE will step up to the plate and provide planning and support for the factory tours that had been scheduled for 2013.

Our training committee is planning a tape workshop, with details found later in this newsletter, taught by Jenny Smith and Will Randle. I have personally taken this workshop from Will and Jenny in the past; I found them both to be excellent instructors and learned a great deal in the course. It is great that we have so many amazing scientists within our own organization!

We will also have an online election coming up later this summer/early fall. If you have any inclination, I strongly urge you to throw your hat in the ring for the ASTEE Board of Directors. It truly is a rewarding experience to help move the organization forward and work with a great group of board members. I know that my experiences on both the MAFS board and the ASTEE board have shaped my career.

Thank you for your membership, support, participation and dedication to ASTEE and the trace evidence discipline. I wish you a happy and productive summer!

Best regards,

Christopher Bommarito, ASTEE President



Above is a photograph from the Postmortem Root Banding of Hair workshop generously hosted by the Smithsonian National Museum of Natural History this past February. Twenty seven members took part in a hands on workshop focused on microscopic analysis of the characteristics of decomposition at the root end of hairs. Many thanks to Leica and the FBI Laboratory for providing microscopes for the workshop, and to the instructors, **Sandra Koch**, **Karen Lowe**, **Amy Michaud**, and **Steven Shaw**, who donated their time and expertise to put on this workshop.



Just Think...What's at Stake

There's no room for error. While other scientists might be able to mitigate day-to-day mistakes, you cannot. For you, inaccuracies can result in wrongful convictions, felonies being reduced to misdemeanors or guilty criminals being set free. How do you know your results will hold up when it matters most?

To find out, visit www.mt.com/forensiclabs.

METTLER TOLEDO



ASTEE Elections 2013

ASTEE will be holding elections for the following 2014 Board of Directors positions:

President-Elect (1 year term, then serves as President for 1 year)
Secretary (2 year term)
Director (3 year term)

Refer to the bylaws on our website (www.asteetrace.org) for a description of duties for each position. If you are interested in serving on the ASTEE Board of Directors in any of these positions, please send a photo along with a brief bio detailing your qualifications and the reasons why you would like to serve on the Board to Melissa.Balogh@gw.njsp.org as soon as possible. The election will take place via electronic ballot in October.

Running for an elected position is not the only way to be an active member. The Board of Directors is always looking for motivated individuals to help move the organization forward. If you have any ideas on how ASTEE can serve the trace community better or you would like to get involved with one of the committees, please contact any member of the Board of Directors.

Melissa Balogh, ASTEE Awards Committee Chair

ASTEE Communications Committee Update

The newly re-vamped ASTEE website (asteetrace.org) is up and running! The site has a new look, and more content will continue to be added as the year progresses. We hope to add job postings, educational material, and training opportunities, just to name a few things. If you have postings that you would like to have added to the site, please send the information to asteetrace@gmail.com. Additionally, ASTEE members can sign-up for an account on the site. Currently, the members-only portion of the site provides a contact roster for all of the ASTEE members. Moving forward, we will be developing more content for the members-only section which will provide a greater wealth of knowledge to our membership on various areas of Trace Evidence analysis - both traditional and novel.

Jeffrey Dake, ASTEE Communications Committee Chair

ASTEE Awards Committee Update

The Awards Committee has been hard at work developing the first ASTEE Professional Development Award. The Professional Development Award, Edmond Locard Award for Excellence in Trace Evidence and the Student Scholarship award were all due June 1, 2013. The awards committee has screened and forwarded their recommendations for each award to the Board of Directors. The awards committee is interested in adding an additional person to the committee panel. If you are interested in being a part of the awards committee, please contact Michelle Palmer at michelle.palmer@dfs.virginia.gov.

Michelle Palmer, ASTEE Awards Committee Chair

INTER/MICRO 2013

July 15–19 at McCrone Research Institute, Chicago

Symposium • Workshop • Awards Dinner • Exhibitors

McCrone Research Institute is proud to host the 65th annual Inter/Micro conference at its facility in Chicago. Since 1948, conference participants have given informative research presentations in all aspects of microscopy, methods and materials, including talks on forensics, criminalistics and trace evidence. Many attendees believe that Inter/Micro is the best microscopy meeting of its kind due to the quality of the multidisciplinary technical talks, the experts in all areas of microscopy who attend and the event's friendly and casual atmosphere.



McCrone Research Institute will host Inter/Micro 2013 at its facilities at 2820 S. Michigan Avenue in Chicago.

REGISTER NOW

Inter/Micro 2013
McCrone Research Institute
2820 S. Michigan Avenue
Chicago, IL 60616-3230
phone: 312-842-7100, fax: 312-842-1078
intermicro@mcri.org
www.mcri.org

Preliminary Schedule

All events will be held at McCrone Research Institute in Chicago, unless otherwise noted. Schedule is subject to change.

Monday, July 15

9 a.m.–5 p.m. Presentations: Techniques and Instrumentation
5:30 p.m.–7 p.m. Dinner in the McRI Garden
7 p.m.–8 p.m. Evening with Brian: "Movie Star Microbes"

Tuesday, July 16

9 a.m.–5 p.m. Presentations: Environmental and Industrial Microscopy
5 p.m.–6 p.m. Wine and Cheese Reception with Exhibitors
7 p.m.–9 p.m. Dinner at Reggies, 2109 S. State Street

Wednesday, July 17

9 a.m.–5 p.m. **Presentations: Chemical and Forensic Microscopy**
6:30 p.m.–10 p.m. SMSI Awards Dinner at Mercat a la Planxa, 638 S. Michigan Avenue. SMSI 2013 Émile M. Chamot Award recipient: Thomas J. Hoppen

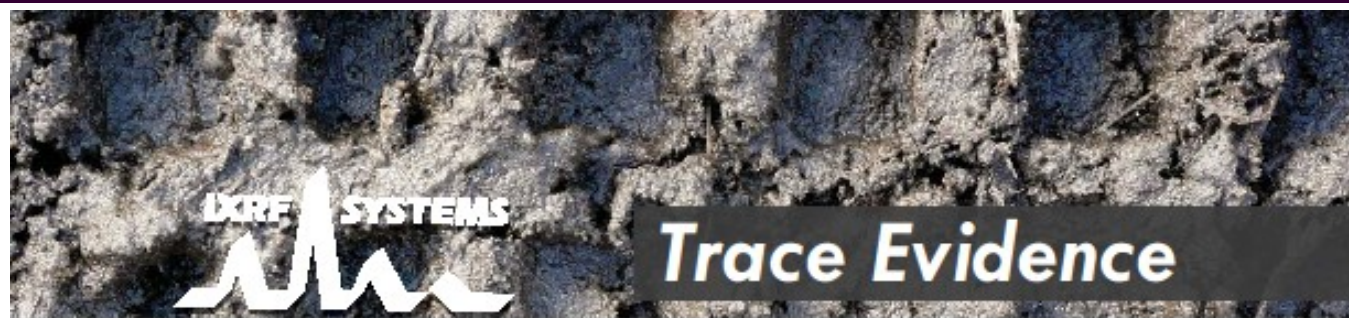
Thursday, July 18

9 a.m.–5 p.m. Workshop: Modern Pollen Identification and Aerobiology (Part 1)

Friday, July 19

9 a.m.–5 p.m. Workshop: Modern Pollen Identification and Aerobiology (Part 2)

For registration forms, visit the Inter/Micro section on www.mcri.org.

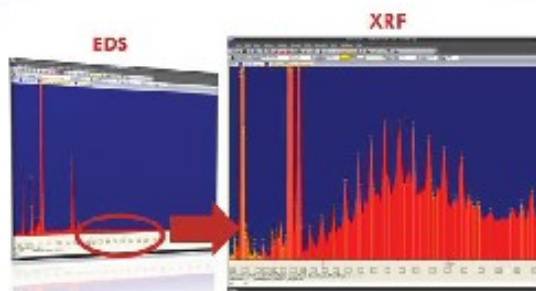


**Make your SEM
work HARDER & SMARTER**
Add micro-XRF to your SEM
 Increased detection above 2keV

GLASS CHIPS

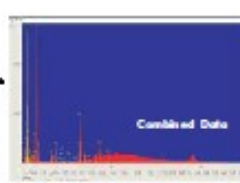
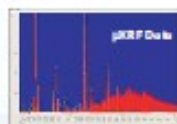
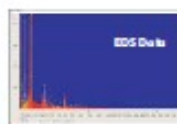


XRF gives parts per million detection
without the background of EDS



NIST 610 Glass Standard

SOILS



Combined EDS and XRF data

PAINT CHIPS



Analysis &
Mapping



ASTEE Reception at National Museum of Crime and Punishment

On February 19, 2013, ASTEE hosted an evening reception at the National Museum of Crime and Punishment that included free tours of the museum. The event filled up to maximum capacity, and brought ASTEE members together from around the country in an informal venue that was fun and relevant to our mission of encouraging the exchange of ideas and information through improved contact between those involved in trace evidence analysis. Thank you very much to **Sandra Koch** and **Amy Michaud** for all of their hard work organizing the event. In addition, many thanks to our generous sponsors, Leica Microsystems, Inc., Foster and Freeman, Gateway Analytical, Craic Technologies, Mettler Toledo, iXRF Systems, Inc., and the McCrone Research Institute for providing the funding that made the event happen. Craic Technologies was especially generous, providing additional event sponsorship fund specifically for the reception.

Photographs of the event are provided here and on the following page, generously provided by **Sandra Koch**.

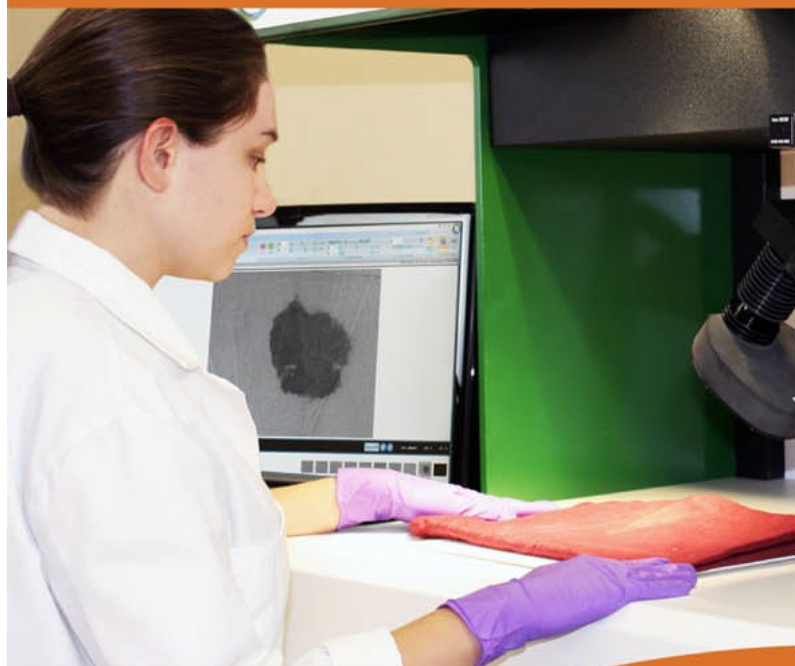




ASTEE Reception at National Museum of Crime and Punishment



Forensic Analytical Testing & Consulting Services



- ▶ Trace Evidence Examination
 - Animal & Human Hair
 - Condom Lubricant
 - Glass
 - Gunshot Residue
 - Paint & Tape
 - Synthetic & Natural Fibers
 - Unknown Materials
- ▶ Cold Case Reviews
- ▶ Crime Scene Processing
- ▶ Court-Qualified Experts

Reliable Support to Ease Casework Demands



Tel: +1 724-443-1900

E-mail: info@gatewayanalytical.com

www.gatewayanalytical.com



Free Webinar, August 8, 2012:
**Forensic Analysis of Paint and Tapes
for Police & Attorneys**
Register: <http://goo.gl/pYaQA>

With increasing workloads, decreasing budgets and growing backlogs, it's becoming more challenging to get work completed on time and on budget. Trust Gateway Analytical to be an extension of your own capabilities. Whether you need specialized expertise or equipment, conventional or innovative lab services, or guidance on a cold case - our forensic testing and consulting services produce accurate, legally defensible results that can help ease your casework demands.

Gateway Analytical is committed to quality. We are an ISO 9001:2008 certified laboratory and have more than 15 years of experience. You can rely on our expertise for trace evidence analysis, criminal and civil case review, innovative forensic analysis, and more.

Results from a Survey Regarding the Educational Needs of ASTEE Members

Sarah Walbridge-Jones, ASTEE Education Committee

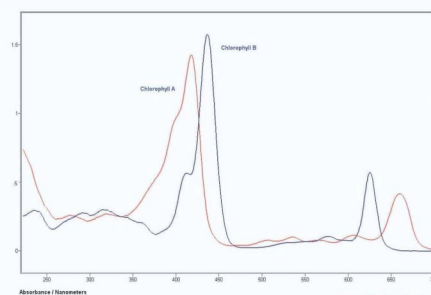
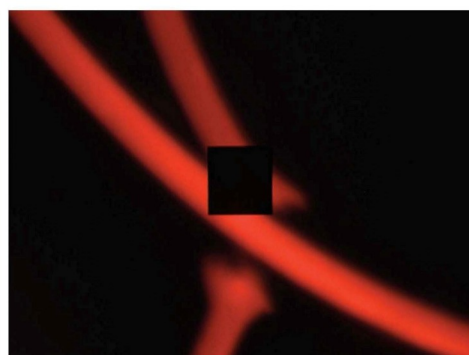
Last year the education committee sent out a survey with hopes of getting feedback from our members as to desired educational needs. The trend for trace education has centered on regional meetings, NIJ sponsored courses and a biennial trace evidence symposium. The objective of the survey was to 1) identify any gaps in trace training, 2) collect opinions on specific training in which the education committee had identified and 3) consider suggestions for needed areas of training. We had both local and international responses with 149 members completing the survey. A total of 123 respondents felt that workshops were needed beyond those offered at regional meetings. When asked where members would like to attend workshops most felt that a regional meeting was the best location followed by a university/college setting. Respondents felt that the AAFS meeting was not the best location.

To address the second objective, members were asked if they would be interested in the following specific workshop ideas: post-mortem root banding, ropes/cordage examination, fabric damage/fabric impression, dye analysis, and garbage bag examinations. Over 72% of the respondents felt that they would be interested in attending a course on all of these subjects with the exception of a post-mortem root banding workshop. Although at the time of the survey only forty-two percent were in favor of this training, the 2013 ASTEE sponsored workshop on post mortem root banding was well attended. Not surprisingly, most respondents are inhibited from receiving training due to agency funding (64%) and location (62%). Time away from the laboratory mattered (42%) but did not have the same impact as cost. When asked how often respondents receive external training, 65% of respondents said they receive training once per year. Some respondents, 19%, indicated that they receive training at least 2-3 times per year. Only 7% of respondents said that they “rarely” or “never” receive external training with additional comments reflecting that lack of money was the reasoning for this.

Lastly, the open ended question asking members to suggest needed training generated numerous ideas for the education committee to consider. Advanced Instrumentation courses including a focus on interpretation, statistics, tape analysis, and data analysis/interpretation and report writing were some of the suggested areas in which the ASTEE education committee is considering focusing on for the upcoming year. ASTEE has already sponsored a rope/cordage course and is looking to deliver workshops in other areas of interest including fabric damage/fabric impression, dye analysis, and garbage bag examinations. Please contact the education committee if you would either be interested in teaching or hosting such workshops.

Overall, the results of this survey reflect an interest in continued education for the trace community with the main hurdle being agency funding. Aligned with ASTEE’s mission, the education committee will continue to keep this information in mind when brainstorming new ideas for the educational future of our members.

Thank you to everyone who participated in this survey.



YOUR SOLUTION FOR TRACE EVIDENCE

Advanced technology solutions for fibers, paints, glass, polymers, explosives, drugs and more. Call us today to learn how we can help you solve your case quickly and accurately.

- UV-visible-NIR Microspectroscopy
- UV-Visible-NIR Polarization Spectra
- UV-visible-NIR Microscopic Imaging
- UV-Visible-NIR Fluorescence Spectra
- Glass Refractive Index
- UV-Visible-NIR Fluorescence Imaging
- Raman Microspectroscopy
- Glass Color Spectra
- UV-Visible-NIR Polarization Imaging

For more information, call **877.UV.CRAIC** or visit our website at **www.microspectra.com**

©2011 CRAIC Technologies, Inc. San Dimas, California (USA).

CRAIC
TECHNOLOGIES

ASTEE Education Committee Update

ASTEE is sponsoring a three day workshop on tape examination the week of August 26th at the Johnson County (KS) Sheriff's Office Criminalistics Laboratory. This workshop is an introduction to the construction and analysis of tapes commonly received as evidence. These include: duct, electrical, clear packing, masking and strapping tapes. The different instrumental methods for analysis will be discussed with an emphasis on those exams that are most discriminating. Variability of the given tape product will also be discussed. A short refresher course in polarized light microscopy and polymer chemistry will be included plus hands-on lab exercises and a mock duct tape comparison. It is assumed that participants will have a working knowledge of FT-IR, pyro-GC/MS, EDS and Microscopy. A workbook and collection of reference material will be provided for each participant. More details will follow soon, and additional training opportunities are being planned for the future as well, so stay tuned.

Sandra Koch, ASTEE Education Committee Chair

ASTEE Audit Committee Update

Many thanks are due to our past Treasurer, **Sandy Parent**, who did an excellent job of managing ASTEE's finances for several years. The ASTEE Audit Committee has nearly completed their audit of the 2012 financials, and greatly appreciated how organized Sandy Parent was, as it made our job much easier. Thanks to **Jenny Smith** for guiding me through the audit and for donating her time and attention to detail to the audit process. ASTEE feels that it is important for you to know where your dues money is going, so below are the 2012 ASTEE income and expenses.

Andrew Bowen, ASTEE Audit Committee Chair

2012 ASTEE Income

3/19/2012	CRAIC Sponsorship	\$ 1,500.00
3/19/2012	Foster and Freeman Sponsorship	\$ 1,500.00
3/19/2012	Dues	\$ 2100.00
3/20/2012	Membership	\$ 75.00
3/21/2012	Dues	\$ 500.00
3/22/2012	Dues	\$ 560.00
5/4/2012	Dues	\$ 760.00
5/4/2012	Dues	\$ 25.00
5/7/2012	Dues	\$ 500.00
5/30/2012	Gateway Analytical Sponsorship	\$ 2000.00
5/30/2012	Dues	\$ 200.00
5/30/2012	Membership	\$ 5.00
6/8/2012	Dues	\$ 411.45
9/10/2012	Inter-Micro Event Reimburse	\$ 235.00
9/10/2012	Dues	\$ 107.00
9/24/2012	Membership, Dues	\$ 130.00
11/30/2012	iXRF Sponsorship	\$ 500.00
12/31/2012	Dues	\$ 105.00
Total		\$ 11,213.45

2012 ASTEE Expenses

2/9/2012	AAFS Event Max Lager's Deposit	\$ 500.00
2/27/2012	AAFS Event Max Lager's Payment	\$ 2865.17
2/29/2012	I/M Event Reggies Deposit	\$ 550.00
3/20/2012	DeLorenzo (Award Plaque)	\$ 107.00
3/27/2012	Returned Check	\$ 20.00
3/27/2012	Returned Check Fee	\$ 12.00
4/27/2012	Chris Taylor (Award Reimbursement)	\$ 550.15
5/16/2012	Blue Ridge (BOD Plaques)	\$ 232.55
5/18/2012	ASTEE Scholarship	\$ 250.00
7/27/2012	Chris Taylor (Reggies Reimbursement)	\$ 1600.40
8/10/2012	Bryan Holden (Website)	\$ 59.88
12/4/2012	Chris Bommarito (Simply Voting Reimbursement)	\$ 358.72
12/19/2012	Virtual Vision (Website)	\$ 819.35
Total		\$ 7,925.22

ffTA



Modular trace evidence analysis system

- Fluorescence Imaging
- Raman spectroscopy
- GRIM® Glass RI measurement
- Image processing
- UV Micro-spectroscopy

A new concept from Foster + Freeman...

The ffTA is a powerful and flexible multifunctional system that provides the crime laboratory with a range of analytical facilities using a single microscope and PC.

Built around the Leica DM2500 laboratory microscope the modular design of the ffTA allows the end user to build an instrument that meets their own specific laboratory requirements with the option of retro-fitting new modules to expand the system's capabilities when required.

The multi-functional ffTA can be seen to improve laboratory efficiency while at the same time providing an economical resource designed to match your laboratory's requirements.

SIC EVIDENCE - FORENSIC EVIDENCE
FORENSIC EVIDENCE - FORENSIC EVIDENCE
SIC EVIDENCE - FORENSIC EVIDENCE
FORENSIC EVIDENCE - FORENSIC EVIDENCE
ENSIC EVIDENCE - FORENSIC EVIDENCE
SIC EVIDENCE - FORENSIC EVIDENCE
VIDENCE - FORENSIC EVIDENCE
FORENSIC EVIDENCE - FORENSIC EVIDENCE
E - FORENSIC EVIDENCE
SIC EVIDENCE - FORENSIC EVIDENCE
VIDENCE - FORENSIC EVIDENCE

foster + freeman

Innovation in Trace Evidence Analysis by foster + freeman

Improving the Quality of Forensic Evidence

ECCO



Laser Induced Breakdown Spectrometer

Versatile Foster + Freeman ECCO adds LIBS to the forensic examiner's arsenal.

ECCO is a new turnkey system from Foster + Freeman designed to give elemental analysis of trace evidence such as glass, metals, paint, fibres, tapes, minerals and fillers, etc. as well as rapid screening of GSR by laser induced breakdown spectroscopy (LIBS).

LIBS is a relatively new technique for elemental analysis which offers significant advantages in speed, sensitivity and cost effectiveness over other processes such as XRF, SEM, and mass spectroscopy.

Elemental comparisons with ECCO are fast and simple to perform, require minimal sample preparation and give immediate read out of the major, minor and trace elements down to concentrations of low parts per million.

- Automatic identification of elements
- Casework and research modes of operation
- Dedicated software for routine analysis

ASTEE Membership Application

DIRECTIONS:

1. All information supplied on this form WILL be verified.
2. Type or print in ink and check your preferred mailing address.
3. Attach a copy of your curriculum vitae/resume and lists of applicable forensic coursework to this form.
4. Have two (2) current ASTEE members propose and second your membership application.
5. Please enclose a check or money order (made payable to ASTEE) for the current year's dues plus the application fee totaling \$25. If your application is accepted on or after October 1st, the \$20 dues will be counted for the following calendar year.
6. Mail application and fee to the Membership Chair (see address below).

Name:

Agency:

Title:

Preferred Mailing Address: ☐ HOME ☐ BUSINESS

Business Phone: () EXT. _____

E-mail Address:

Education and Experience: (attach Curriculum Vitae/resume and a list of applicable forensic course work)

Please select any disciplines in which you actively conduct analysis/examinations.

- | | | |
|---|--|--|
| <input type="checkbox"/> Administration | <input type="checkbox"/> General Unknowns | <input type="checkbox"/> Ink |
| <input type="checkbox"/> Explosives | <input type="checkbox"/> Glass | <input type="checkbox"/> Paints & Polymers |
| <input type="checkbox"/> Fibers | <input type="checkbox"/> Gunshot Residue | <input type="checkbox"/> Physical Matches |
| <input type="checkbox"/> Fire Debris | <input type="checkbox"/> Hairs | <input type="checkbox"/> Soil |
| <input type="checkbox"/> Forensic Education | <input type="checkbox"/> Impression Evidence | |

My signature acknowledges that all information on this form is accurate to the best of my knowledge.

Signature of Applicant Date

PROPOSAL FOR MEMBERSHIP:

ASTEE Member #1 Signature: _____ Printed Name: _____ Daytime phone: () _____	ASTEE Member #2 Signature: _____ Printed Name: _____ Daytime phone: () _____
ASTEE Membership Chair Lawrence Wayne Forensic Analytical Laboratories, Inc. 3777 Depot Rd., Suite 409 Hayward, CA 94545	For ASTEE Use Only Date application & fee received: _____ Check No. _____ ASTEE Membership No. _____



WWW.ASTEETRACE.ORG